

Photo Sensor / Mark Sensor

FIBER SENSOR



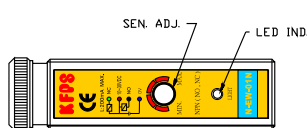
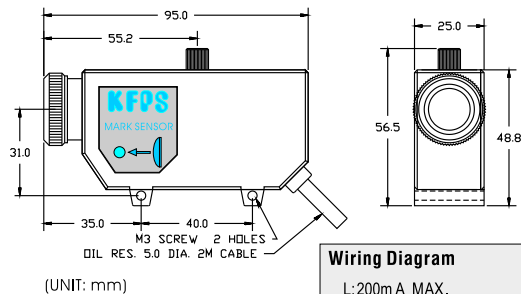
■ Features

- High speed response time: 0.2ms
- Auto-tuning of sensitivity and emitting strength, easy to finish the function setting
- Output off delay: 0.1s (optional)
- Dark ON / Light ON changeable
- NPN & PNP TWO OUTPUTS

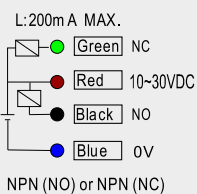
■ Specification

| Wiring Type | Lead Wire (4C/0.5x2M) | | M8 Lead-wire with connector | |
|---------------------|--|---------|-----------------------------|------------|
| | MF-06R | MF-06RT | MF-06R-M8 | MF-06RT-M8 |
| Output Delay | None | 0.1s | None | 0.1s |
| Response Time | 0.2ms | | | |
| Emitter | High efficiency Red LED | | | |
| Operating Voltage | 10~30VDC ; Ripple < 20% of peak to peak | | | |
| Current Consumption | 45mA max. | | | |
| Output Method | NPN & PNP two outputs | | | |
| Output Status | NO / NC changeable | | | |
| Output Current | 150mA max. | | | |
| Leakage Current | 0.8mA. Max. | | | |
| Residual Voltage | 0.8V Max. | | | |
| Protection Circuit | Short circuit & Polarity Reversed protection | | | |
| Housing Material | Intensive ABS | | | |
| Protection Class | IP 65 | | | |
| Operating Ambient | -20°C ~ +60°C ; 35 ~ 85% RH | | | |

N-EW-01N



Wiring Diagram



MARK SENSOR

Model No. N-EW-01N

| SPECIFICATION | DESCRIPTION |
|----------------------------------|---|
| METHOD OF DETECTION | DIFFUSE REFLECTION TYPE |
| OPERATING VOLTAGE | 10-30VDC PERMISSIBLE(P-P) 10% MAX. |
| CURRENT CONSUMPTION | <40mA |
| DETECTING DISTANCE | 14~20MM |
| OBJECT | 1MM dia. Min. |
| LOAD CURRENT | 200mA MAX. |
| SWITCHING FREQUENCY | 1KHz |
| PROTECTION CIRCUIT | SHORT CIRCUIT & POLARITY REVERSED PROTECTION |
| INDICATOR | LIGHT INDICATOR (RED) |
| LIGHT SOURCE | WHITE LIGHT LED |
| SENSITIVITY | SINGLE TURN |
| OUTPUT TYPE | NPN NO / NPN NC |
| INSULATION RESISTANCE | MIN. 20M OHM (500VDC) MEGGER |
| DIELECTRIC STRENGTH | AC 1000V 50/60 1 MINUTE |
| AMBIENT TEMPERATURE AND HUMIDITY | -25° to +70°C ; 35 ~ 95% RH |
| ALLOWABLE AMBIENT ILLUMINATION | LAMPLIGHT: 3000Lux SUNLIGHT : 10000 Lux |
| VIBRATION RESISTANCE | Double Amplitude 1.5mm 10 to 55Hz each 2hours X,Y,Z, DIRECTION |
| IMPACT RESISTANCE | 490M/S ² (approx. 50G'S) 3 TIMES EACH OF X.Y.Z. AXES |
| PROTECTION GRADGE | IEC IP-67 |
| HOUSING MATERIAL | PBT |
| WEIGHT | 170g |

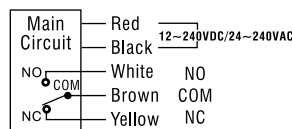
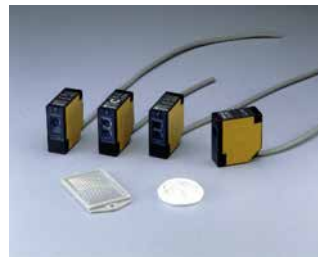
MARK SENSOR

MS-02W



Model No: **MS-02W** (Lead-wire Type)
 Response Time: 0.2ms
 Setting Distance: 25.0 ± 2.0mm
 Emitter & Light spot: White Light Led with spot 2.0Ø d:
 Output Method: NPN & PNP (Two Outputs) ; NO or NC changeable
 Output Current: Max. 150mA
 Current Consumption: Max. 40mA

FREE POWER PHOTO SENSOR A3-series



Extensive Operating Voltage: DC12~240V or 24~240VAC
 High capacity Relay output 3A/250VAC
 Standard structure IP-65 or Water-proof mode I with structure IP-67

| Reflex Type - Model No | A3R-30X | A3R-1MX | A3R-2MX |
|--------------------------|------------------|----------|----------|
| Sensing Distance | 30cm | 100cm | 200cm |
| Output Status | NO <Received ON> | | |
| Min. Sensible Object | 5.0Ø | | |
| Mirror Reflex - Model No | A3G-2MR | A3G-2MRS | A3G-4MX |
| Sensing Distance | 3M | 2M | 4M |
| Output Status | NO <Break ON> | | |
| Min. Sensible Object | 2.0Ø | 5.0Ø | |
| Thru Beam - Model No | A3T-3MX | A3R-10MX | A3R-20MX |
| Sensing Distance | 3M | 10M | 20M |
| Output Status | NO <Break ON> | | |
| Min. Sensible Object | 2.0Ø | 5.0Ø | 10.0Ø |

Note 1) : Above model plus code "P" for water-proof model

Note 2) : Standard model is NO type, plus code "B" for NC type